

DOCUMENTATION

3D-VIZ TOOL

3D-VIZ TOOL

The 3D-VIZ.COM System

As the first manufacturer of 3D visualization technology we look back at almost 12 years of experience. Our claim is simple: We want to find the best solutions for our customers' demands. With intelligent products of highest quality, superior advantage and great service. Innovative techniques, attractive Design and Suisse quality; with this claim we develop out of fascinating ideas our products. The customer's claims getting higher and higher, the requirements to our products in various scopes of use are continuously changing.

Our challenge is to be a step ahead of these claims; to develop solutions which are future proof; solutions that bring our customers forward.

Contents

Page 2: The 3D-VIZ.COM system

Page 3: Contents

Page 4: A General

B System requirements

C Installation

D Basic requirements

Page 5: E Menu

F Input field

G Start session

H Start batch

Page 6: I Setting name

J Show Output

Page 7: K Setting name

L Delete

M Setting name input

Page 8: O Prefix

P Input

Q Output

Page 9: R Frame

S Template

T Width

U High

Page 10: V Quality

W Zoom_1

X Zoom_2

Y Rotation

Page 11: Z1 Tutorial Video

Z2 Drag and Drop

Page 12: Other

Definitions

Disclaimer

Impressum

A GENERALITIES

Thank you for choosing a 3D-VIZ.COM product. You can be assured of its quality and reliability. The 3D-VIZ.COM brand name is a guarantee for continuous, dedicated development.

The purpose of this Manual is to inform and assist you in installing and using the 3D-VIZ TOOL software. Please read it carefully before starting, and follow all indications, suggestions, important notices and warnings.

B SYSTEM REQUIREMENTS

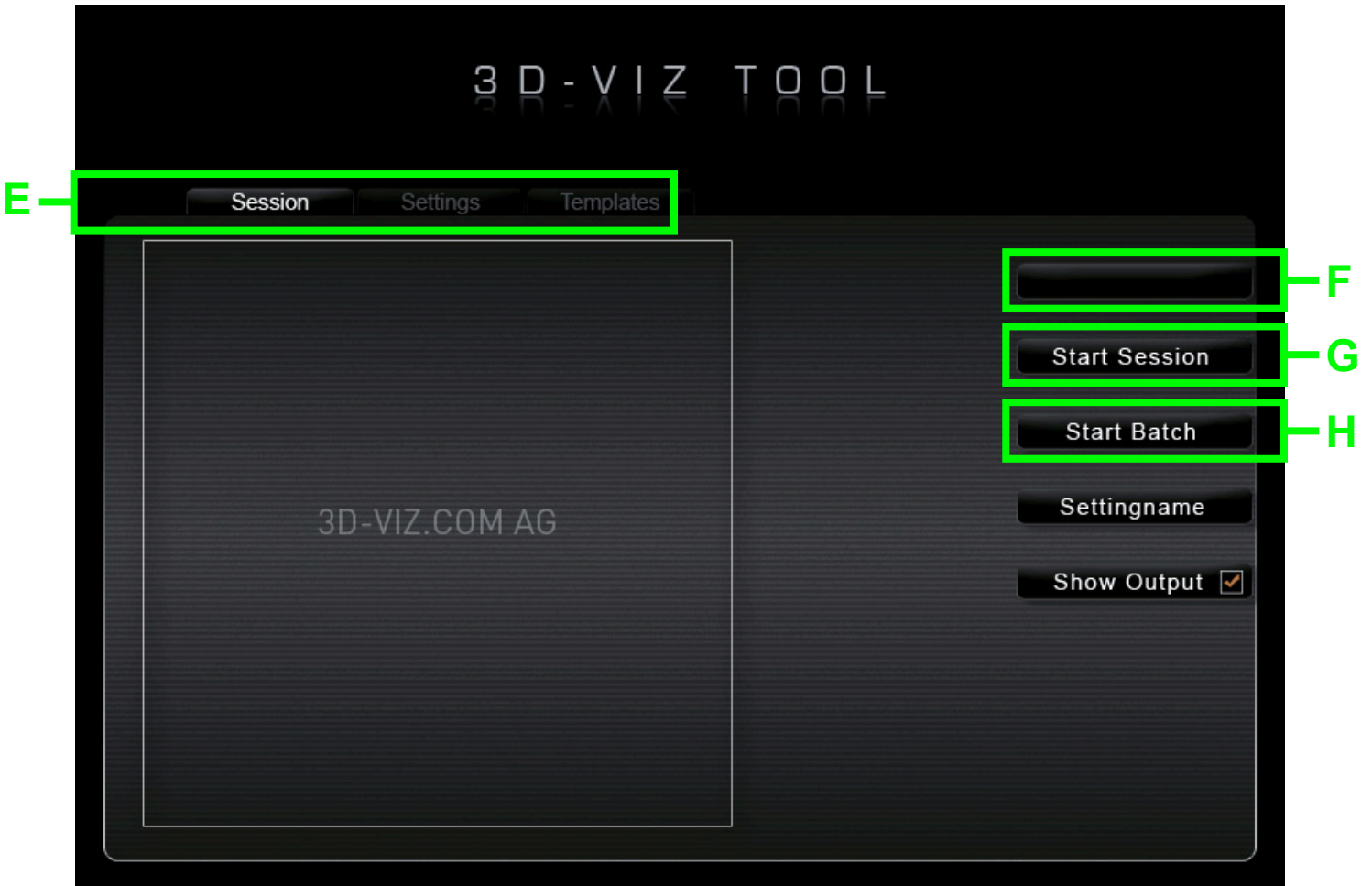
Mac OS X Version 10.6 or higher; 2 GB RAM (4 GB recommended); 2 GB free hard disk space. DONGLE_ driver.

C INSTALLATION

Drag 3D-VIZ TOOL into your Applications folder. Start 3D-VIZ TOOL by doubleclicking the program icon.

D BEFORE STARTING THE SOFTWARE

3D-VIZ TOOL can use the formats tiff and jpg. All Pictures which should be processed by 3D-VIZ TOOL have to have 72 dpi (screen resolution). ATTENTION: If you use a other resolution the output will get unsharp.



E Menu

In the menu, you can choose between the tabs „Session“ and „Settings“. Click on „Template“ to go to the online shop for templates www.3dflashtemplate.com where you can buy standard templates and templates customised according to your specifications.

F Input field

In the input field, you can enter the name for the turn manually or using a manual scanner. This function is only purposeful in combination with „Start session“ and is ignored during batch processing.

G Start session

Click on the „Start session“ button to start the 3D-VIZ TOOL. The values set under „Settings“ will be used. When „Start session“ is clicked, the set folder becomes the hot folder. Please always make sure to start the 3D-VIZ TOOL first and then drag the pictures into the hot folder.

H Start batch

Click on the „Start batch“ button to start the 3D-VIZ TOOL. The values set under „Settings“ will be used. When „Start Batch“ is clicked, the contents of one „Input“ folder (P) after the other will be processed.

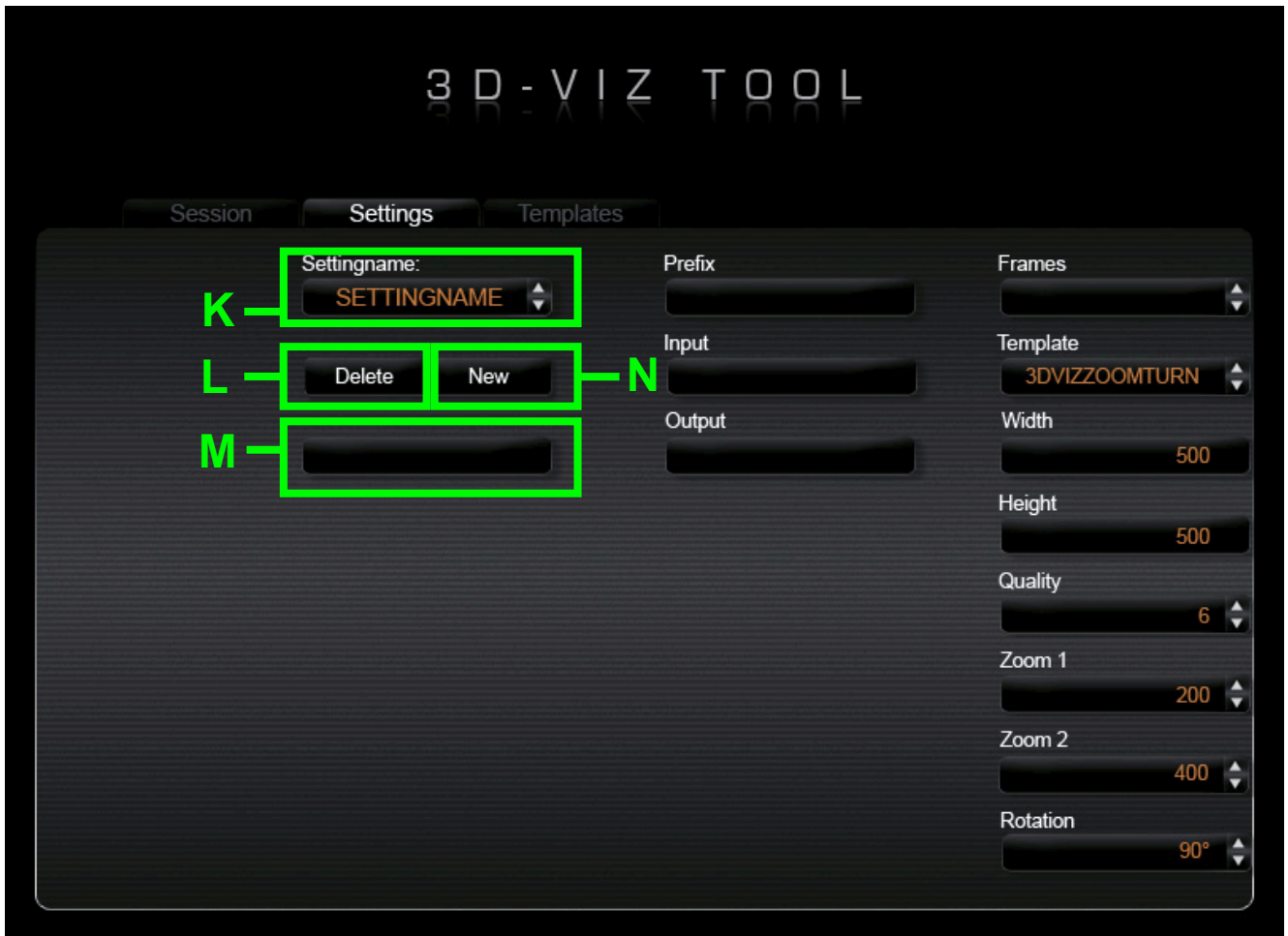


I Setting name

The setting name is set in the Settings and displayed there for information. Specific values can be set in the Settings for each job and can be given a specific name.

J Show output

Activating the „Show output“ button will automatically after completion open the animation in the Web browser. This option is only possible in conjunction with „Start session“.



K Setting name

In this drop-down list, you can select settings that have already been created.

L Delete

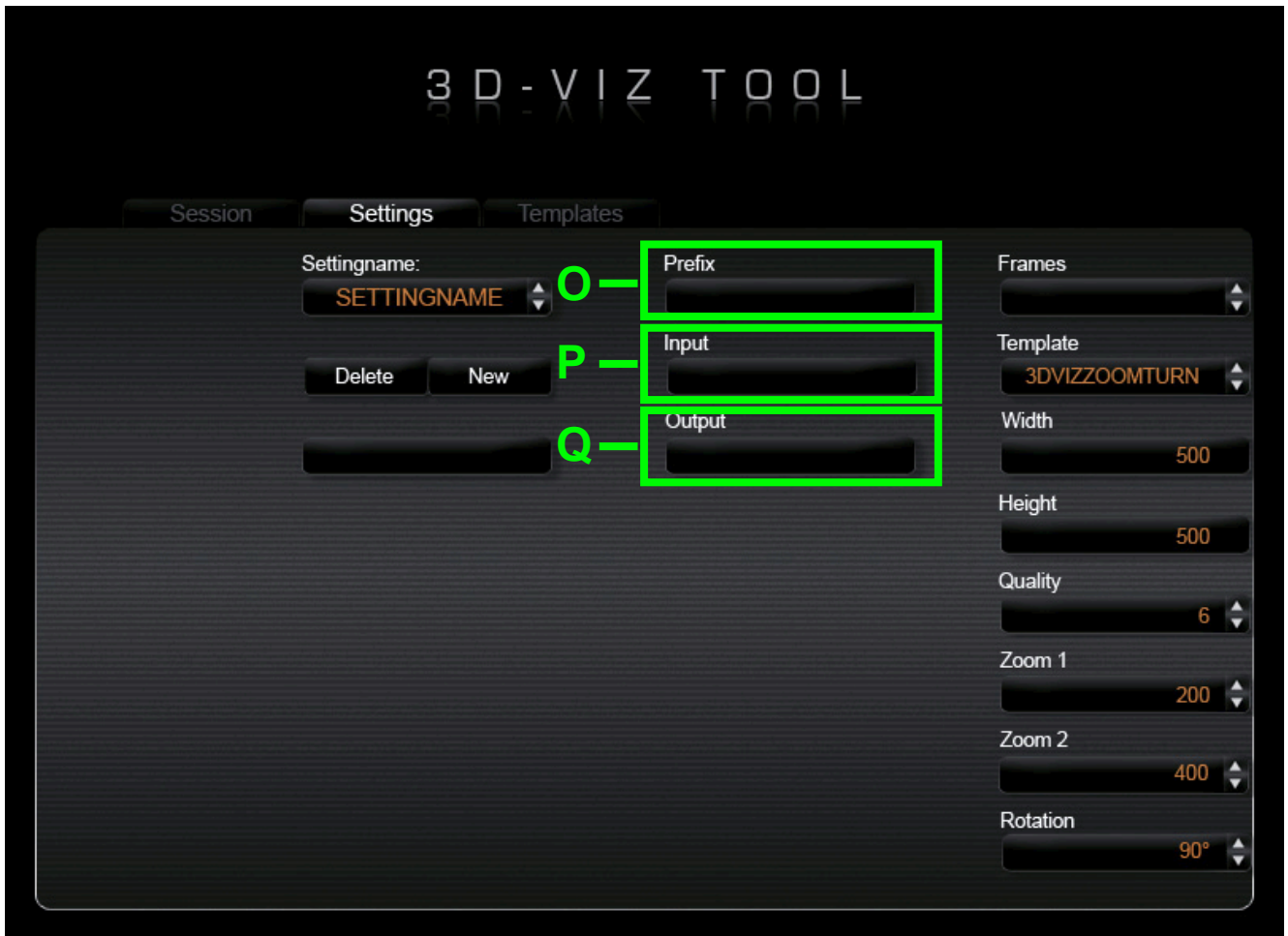
Click on the „Delete” button to delete the currently set setting.

M Setting name input

Clicking on the „New” button allows you to enter the customer/setting name for the new setting you wish to create.

N New

Click on the “New” button to create a new setting.



O Prefix

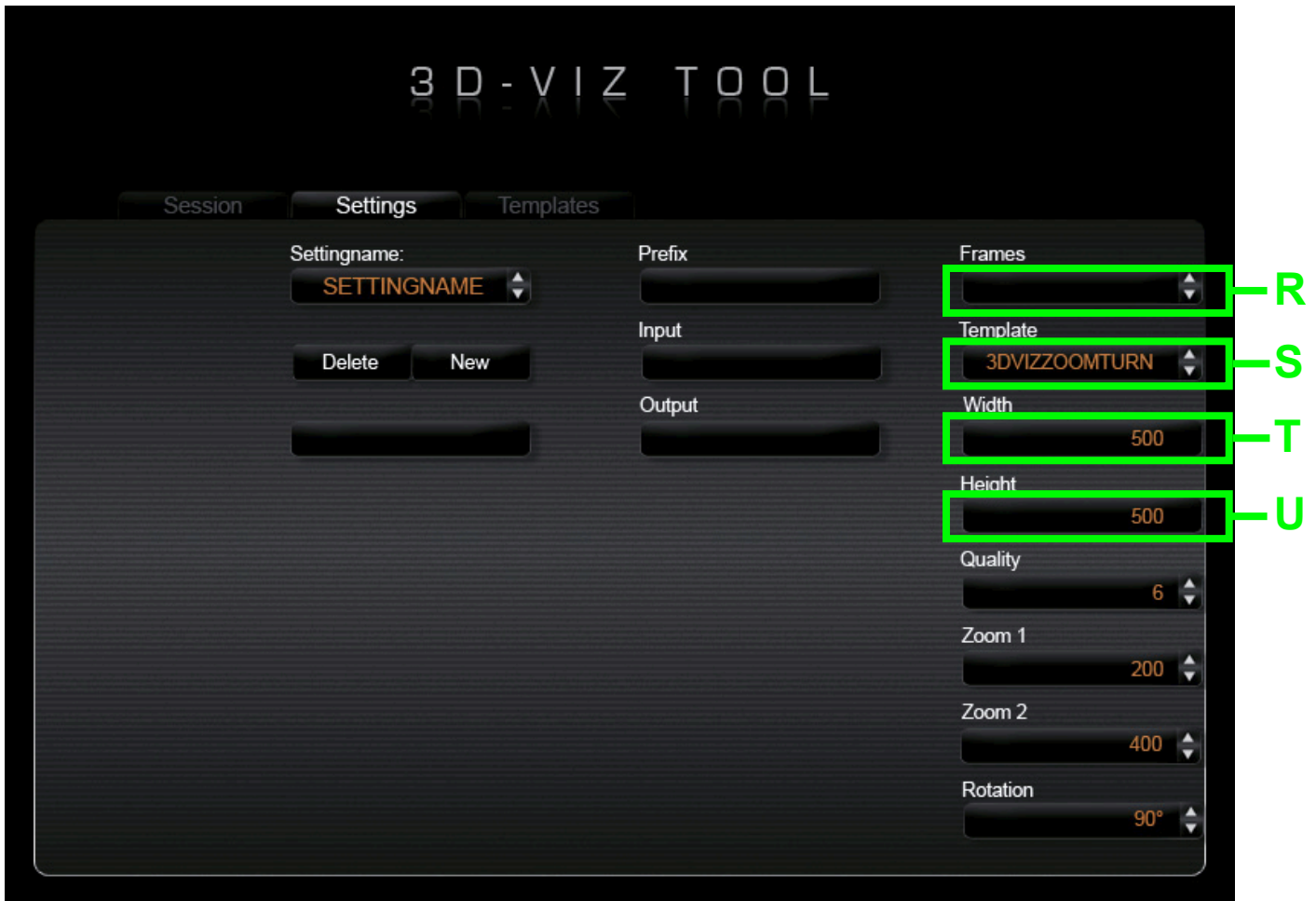
If you wish to add a prefix to the visualization, you can enter it here. The prefix will then automatically be put in front of each value entered in the input field (F).

P Input

Under „Input“, you define the folder that the software is to monitor as HOTFOLDER when you wish to start a session. This folder will be active after the „Start session“ button has been pressed. As soon as the set number of takes is in the folder, the 3D-VIZ TOOL will start processing. For batch processing, this is the folder in that you place the folders with the respectively same number of takes before pressing the „Start batch“ button.

Q Output

Under „Output“, you define the folder in that the animations created during the „Session“ and the „Batch“ are to be stored.



R Frames

In Frames, you define the number of takes the visualization is to comprise. You can choose any value between 2 and 360.

S Template

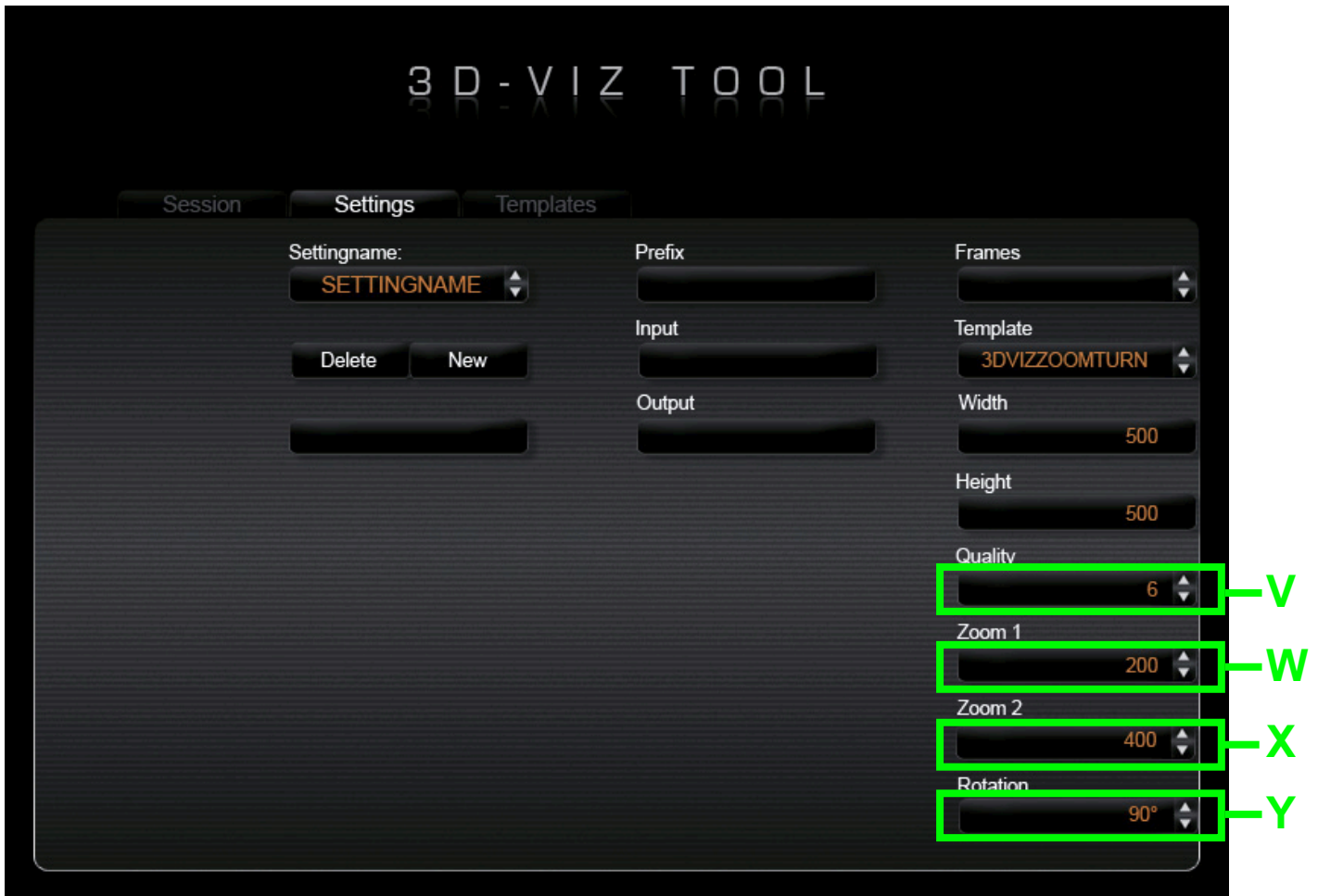
Under Template, you can choose among standard templates. Additional templates are available under <http://www.3dfflashtemplate.com>.

T Width

In Width, you can set the width of the viewer. Please note that the width and height ratio of your view must always be proportional to the width and height ratio of your pictures.

U High

In Height, you can set the height of the viewer. Please note that the width and height ratio of your viewer must always be proportional to the width and height ratio of your pictures.



V Quality

In Quality, you set the quality (compression) of the visualization. 6 is the normal value recommended by us that should normally be selected to ensure a good size- (in kb) to-quality ratio.

W Zoom_1

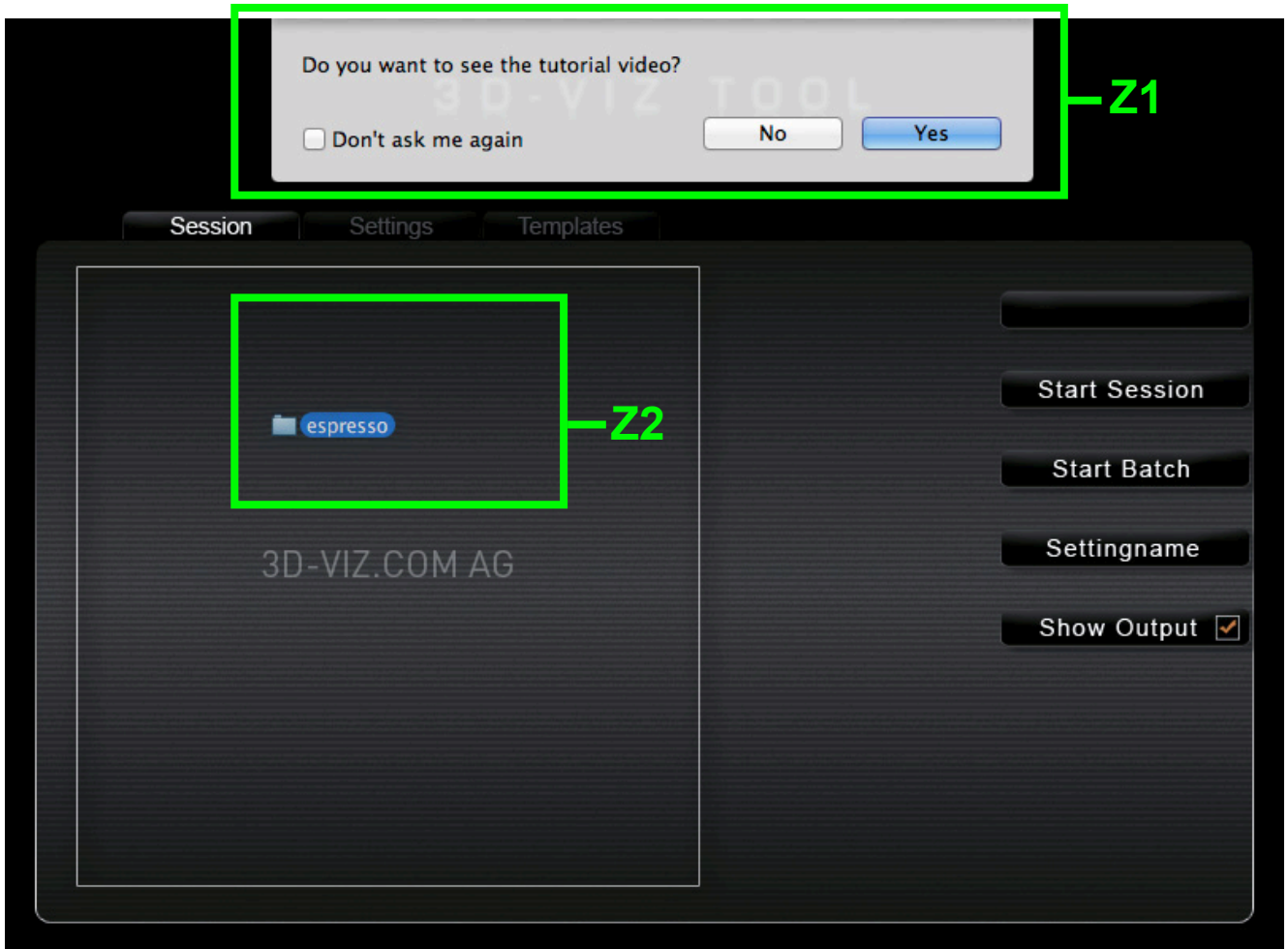
Use Zoom_1 to set the magnification factor of the first zoom level. Depending on the template, you can choose among 200%, 300%, 400% and 500%.

X Zoom_2

Use Zoom_2 to set the magnification factor of the second zoom level. Depending on the template, you can choose among 200%, 300%, 400% and 500%. Prerequisite: A template with two zoom levels is selected.

Y Rotation

In Rotation, you can rotate the picture format. 0°, 90°, 180°, 270° are possible. The directions of rotation are respectively clockwise.



Z1 Tutorial video

When you start the software, you have the opportunity to view the video tutorial. This display appears until you click the „Don` t ask me again“ button.

Z2 Drag and drop

Simply drag and drop your pictures folder on the inner field of the software. The software processes the images with the settings which are set to this point. The folders name is used as the name for the output folder.

Other:

Term definitions

- Templates:
Templates are viewers with pre-configured design and function that are provided for depicting the pictures in standardised form. Additional templates can be purchased under <http://www.3dfashtemplate.com>.
- Settings:
Settings are all possible settings that might be made.

Templates für mobil devices

Please observe the requirements of the manufacturers for producing pictures on mobile devices. On Apple devices, the Html viewer may not exceed the maximum format of the viewer of 1000x1000 pixels.

The settings to be used for iPhone and iPad are max. 500x500 pixels,
zoom 1 = 200%.

Disclaimer

All information in the present manual are purely informative in nature and subject to technical changes without prior notice. Therefore they do not bind 3D-VIZ.COM in any way. 3D-VIZ.COM AG is not liable for possible mistakes or imprecision in the contents of this manual. As it is not possible to control installation, operation, servicing and use of the appliance, 3D-VIZ.COM will not be held accountable for losses, damages or costs of any kind resulting from mistakes or negligence in operation, or any other reason connected with the use of the appliance.

W IMPRESSUM

3D-VIZ.COM AG

RUESSENSTRASSE 11
CH-6340 BAAR
Switzerland

info@3d-viz.com
www.3d-viz.com